

AC OUTLET(アウトレット)

定 格 : 15A 125V

接触抵抗 : 30m 以下のこと

絶縁抵抗 : DC500Vに於いて100M 以上のこと

耐電圧 : AC2000Vに於いて1分間異常がないこと

Rating: 15A 125V

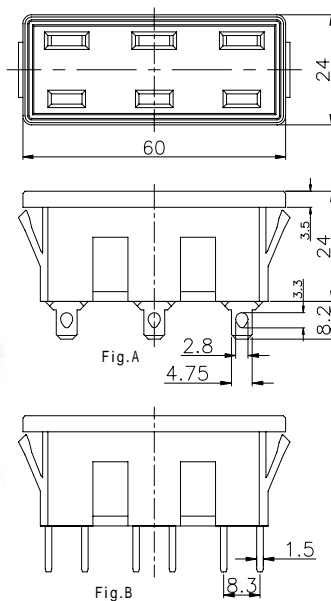
Contact resistance: Under 30m

Insulation Resistance: Over 100M at 500V DC

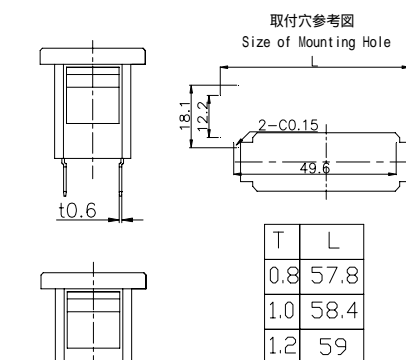
Dielectric withstanding voltage: 1minute at 2000V AC

AC-T Series

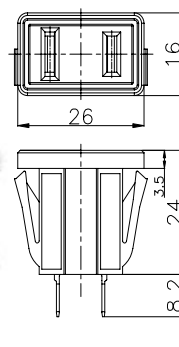
AC-T01FB54



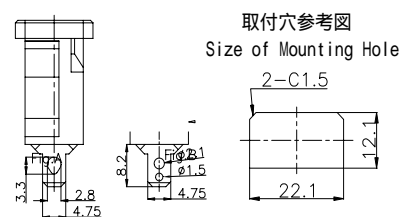
Part No.	Mounting Plate	Pole	Terminal
AC-T01FB54	0.8/1.0/1.2	□	Fig.A
AC-T01LB55	0.8/1.0/1.2	□	Fig.B



AC-T03FB03



Part No.	Mounting Plate	Pole	Terminal	Body Color
AC-T03FB03	0.8/1.0/1.2	□	Fig.A	Black
AC-T03FW26	0.8/1.0/1.2	□	Fig.A	White
AC-T03SB07	0.8/1.0/1.2	□	Fig.B	Black



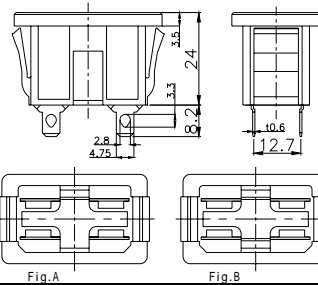
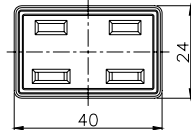
プレス・成形は金型から全て社内での一貫生産方式です。

AC OUTLET(アウトレット)

定 格 : 15A 125V	Rating: 15A 125V
接触抵抗 : 30m 以下のこと	Contact resistance: Under 30m
絶縁抵抗 : DC500Vに於いて100M 以上のこと	Insulation Resistance: Over 100M at 500V DC
耐電圧 : AC2000Vに於いて1分間異常がないこと	Dielectric withstanding voltage: 1minute at 2000V AC

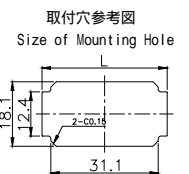
AC-T Series

AC-T05FB13

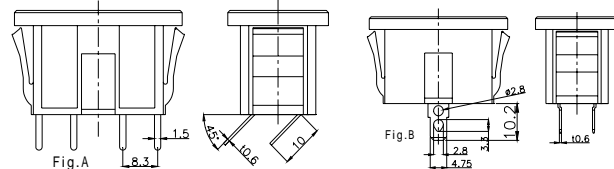
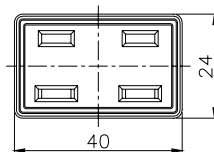


Part No.	Mounting Plate	Pole	Terminal	Body Color
AC-T05FB13	0.8/1.0/1.2	☐	Fig.A	Black
AC-T05FB47	0.8/1.0/1.2	☐	Fig.B	Black

T	L
0.8	36.2
1.0	36.8
12.20	37.4

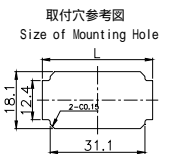


AC-T05SB09

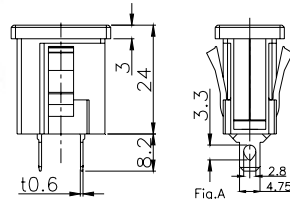
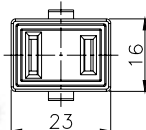


T	L
0.8	36.2
1.0	36.8
12.20	37.4

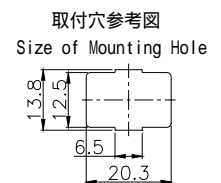
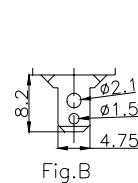
Part No.	Mounting Plate	Pole	Terminal	Body Color
AC-T05LB57	0.8/1.0/1.2	☐	Fig.A	Black
AC-T05SB09	0.8/1.0/1.2	☐	Fig.B	Black
AC-T05SB11	2.0	☐	Fig.B	Black
AC-T05SK80	2.0	☐	Fig.B	White



AC-T09FB19



Part No.	Mounting Plate	Pole	Terminal	Body Color
AC-T09FB19	2.0	☐	Fig.A	Black
AC-T09FW25	2.0	☐	Fig.A	White
AC-T09SB21	2.0	☐	Fig.B	Black



プレス・成形は金型から全て社内での一貫生産方式です。