

AC OUTLET(アウトレット)

定 格: 15A 125V

接触抵抗: 30mΩ以下のこと

絶縁抵抗: DC500Vに於いて100MΩ以上のこと

耐電圧: AC2000Vに於いて1分間異常がないこと

Rating: 15A 125V

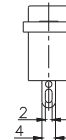
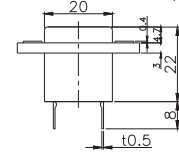
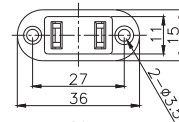
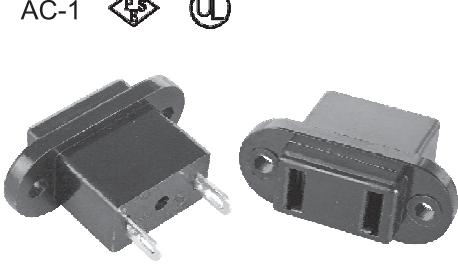
Contact resistance: Under 30mΩ

Insulation Resistance: Over 100MΩ at 500V DC

Dielectric withstanding voltage: 1minute at 2000V AC

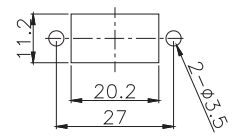
AC-1 Series

AC-1 

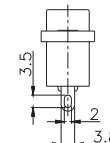
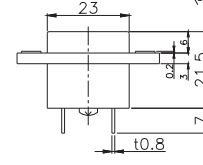
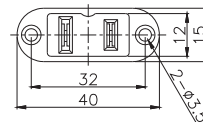
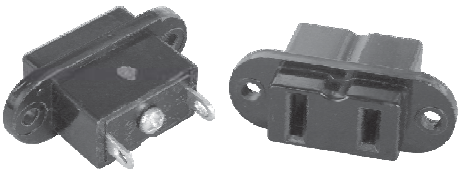


Part No.	Pole
AC-1	□ □

取付穴参考図
Size of Mounting Hole

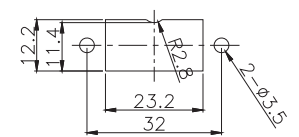


AC-1E 

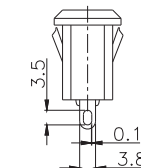
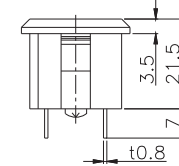
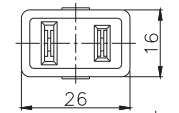
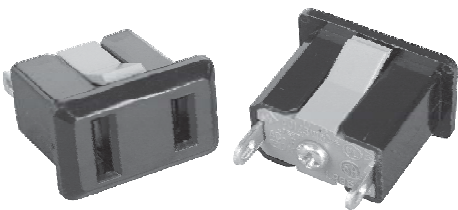


Part No.	Pole
AC-1E-B	□ □

取付穴参考図
Size of Mounting Hole

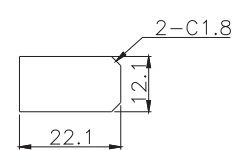


AC-1F 

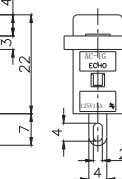
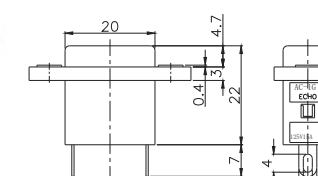
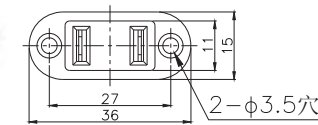
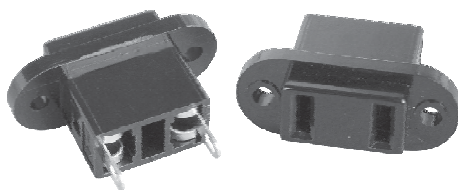


Part No.	Pole
AC-1F	□ □

取付穴参考図
Size of Mounting Hole

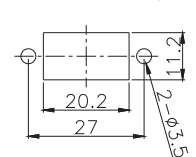


AC-1G 



Part No.	Pole
AC-1G	□ □

取付穴参考図
Size of Mounting Hole

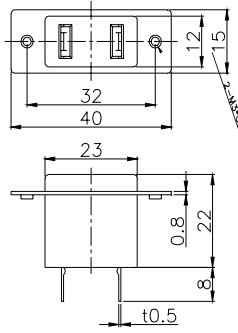


AC OUTLET(アウトレット)

定 格 : 15A 125V	Rating: 15A 125V
接触抵抗 : 30m 以下のこと	Contact resistance: Under 30m
絶縁抵抗 : DC500Vに於いて100M 以上のこと	Insulation Resistance: Over 100M at 500V DC
耐電圧 : AC2000Vに於いて1分間異常がないこと	Dielectric withstanding voltage: 1minute at 2000V AC

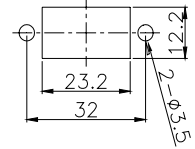
AC-1 Series

AC-1B

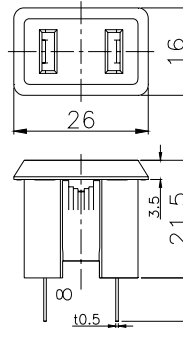
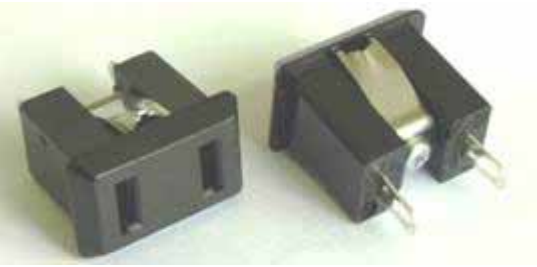


Part No.	Pole
AC-1B	□□

取付穴参考図
Size of Mounting Hole

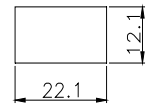


AC-1C



Part No.	Mounting Plate	Pole
AC-1C	1.0/1.2 1.6	□□

取付穴参考図
Size of Mounting Hole



プレス・成形は金型から全て社内での一貫生産方式です。