

## AC INLET(インレット)

定格: 10A 250V(UL.CSA 15A 250V)

絶縁抵抗: DC500Vに於いて100MΩ以上のこと

耐電圧: AC2000Vに於いて1分間異常がないこと

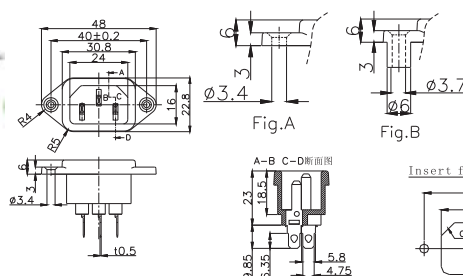
Rating: 10A 250V(UL.CSA 15A 250V)

Insulation Resistance: Over 100MΩ at 500V DC

Dielectric withstanding voltage: 1minute at 2000V AC

### P-Series

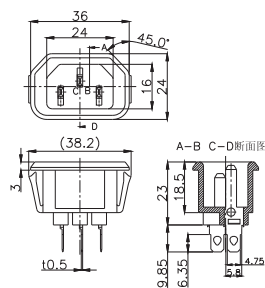
AC-P01CF01 



Part No.	Terminal
AC-P01CF01	Fig.A
AC-P01CR02	Fig.B

取付穴参考図  
Size of Mounting Hole

AC-P03CS05 

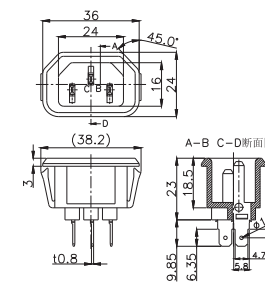


Part No.	Body Color
AC-P03CS10	Gray
AC-P03CS05	Black

取付穴参考図  
Size of Mounting Hole

基板厚	L寸法
0.8	32.3
1.0	32.8
1.2	33.4
1.6	34.4

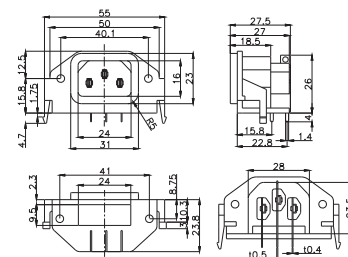
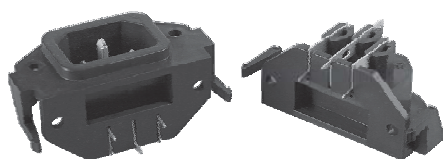
AC-P03CS08K 



取付穴参考図  
Size of Mounting Hole

基板厚	L寸法
0.8	32.3
1.0	32.8
1.2	33.4
1.6	34.4

AC-P05CP24 



取付穴参考図  
Size of Mounting Hole

## AC INLET(インレット)

定格: 10A 250V(UL.CSA 15A 250V)

絶縁抵抗: DC500Vに於いて100MΩ以上のこと

耐電圧: AC2000Vに於いて1分間異常がないこと

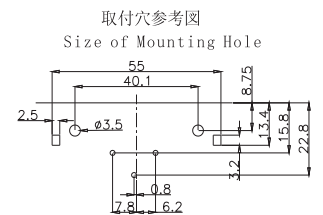
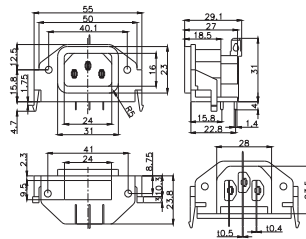
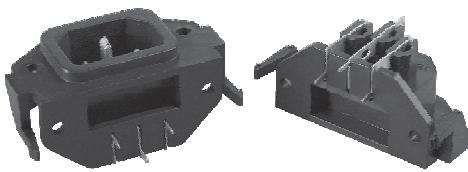
Rating: 10A 250V(UL.CSA 15A 250V)

Insulation Resistance: Over 100MΩ at 500V DC

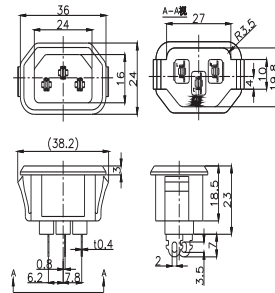
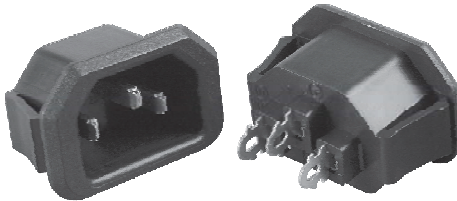
Dielectric withstanding voltage: 1minute at 2000V AC

### P-Series

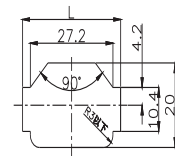
AC-P05CP26



AC-P06CS11

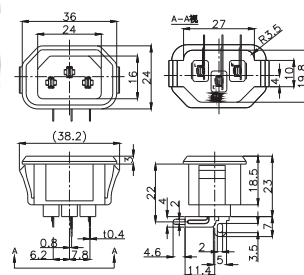


取付穴参考図  
Size of Mounting Hole

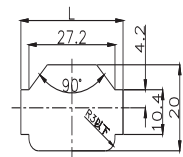


基板厚	L寸法
0.8	32.3
1.0	32.8
1.2	33.4
1.6	34.4

AC-P06CN17

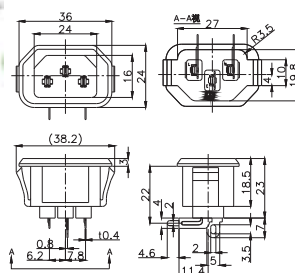
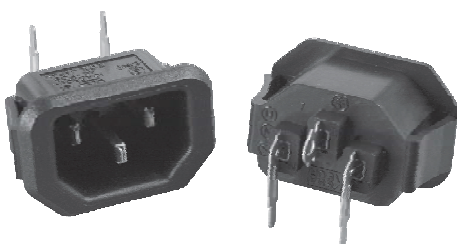


取付穴参考図  
Size of Mounting Hole

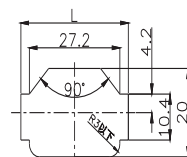


基板厚	L寸法
0.8	32.3
1.0	32.8
1.2	33.4
1.6	34.4

AC-P06CN18



取付穴参考図  
Size of Mounting Hole



基板厚	L寸法
0.8	32.3
1.0	32.8
1.2	33.4
1.6	34.4

## AC INLET(インレット)

定格: 10A 250V(UL.CSA 15A 250V)

絶縁抵抗: DC500Vに於いて100MΩ以上のこと

耐電圧: AC2000Vに於いて1分間異常がないこと

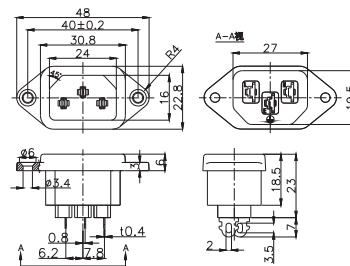
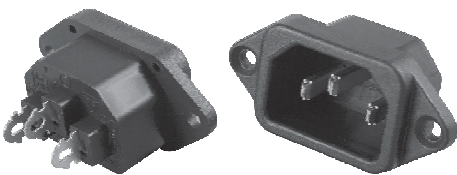
Rating: 10A 250V(UL.CSA 15A 250V)

Insulation Resistance: Over 100MΩ at 500V DC

Dielectric withstanding voltage: 1minute at 2000V AC

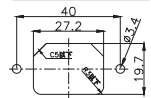
### P-Series

AC-P07CF14 

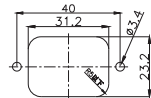


取付穴参考図  
Size of Mounting Hole

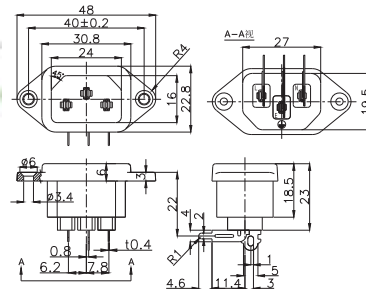
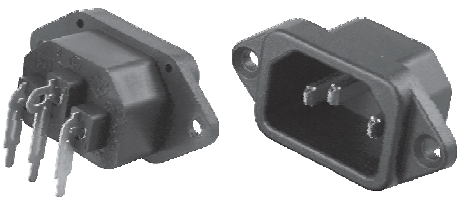
Insert from Front Panel



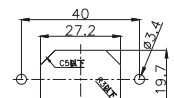
Insert from Rear Panel



AC-P07CN15 

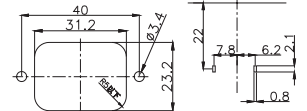


Insert from Front Panel

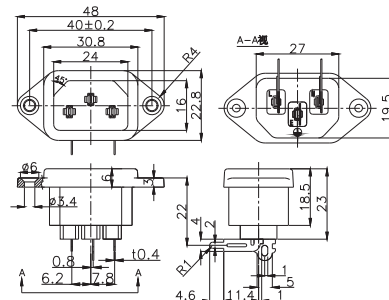
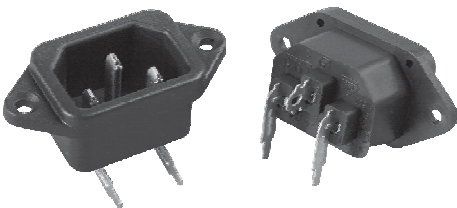


取付穴参考図  
Size of Mounting Hole

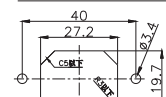
Insert from Rear Panel



AC-P07CN16 

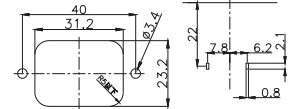


Insert from Front Panel

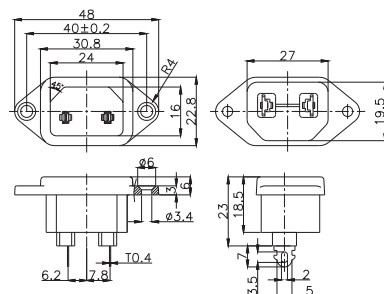
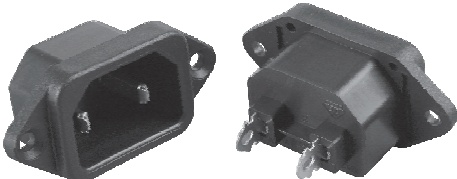


取付穴参考図  
Size of Mounting Hole

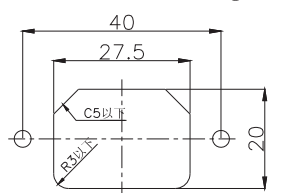
Insert from Rear Panel



AC-P08CN27 



取付穴参考図  
Size of Mounting Hole



## AC INLET(インレット)

定格: 10A 250V(UL.CSA 15A 250V)

絶縁抵抗: DC500Vに於いて100MΩ以上のこと

耐電圧: AC2000Vに於いて1分間異常がないこと

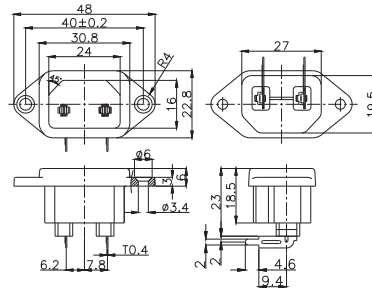
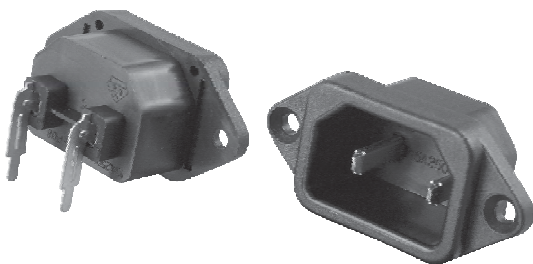
Rating: 10A 250V(UL.CSA 15A 250V)

Insulation Resistance: Over 100MΩ at 500V DC

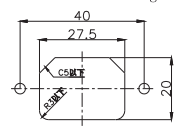
Dielectric withstanding voltage: 1minute at 2000V AC

### P-Series

AC-P08CN28

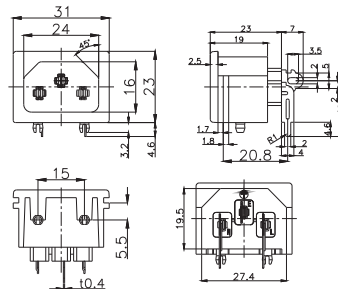
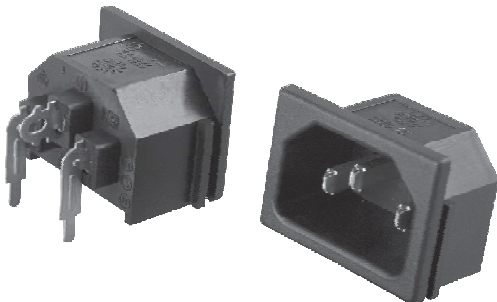


取付穴参考図  
Size of Mounting Hole

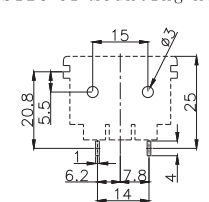


基準

AC-P09CY30



取付穴参考図  
Size of Mounting Hole



## AC INLET(インレット)

定格: 20A 250V FOR UL.CSA

16A 250V FOR SEMKO.CCC

接触抵抗: 30mΩ以下のこと

絶縁抵抗: DC500Vに於いて1000MΩ以上のこと

耐電圧: AC2000Vに於いて1分間異常がないこと

Rating: 20A 250V FOR UL.CSA

16A 250V FOR SEMKO.CCC

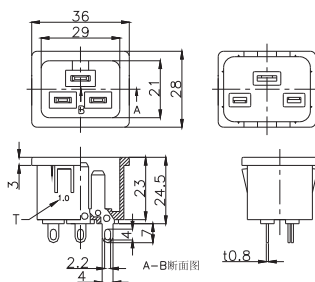
Contact resistance: Under 30mΩ

Insulation Resistance: Over 1000MΩ at 500V DC

Dielectric withstanding voltage: 1minute at 2000V AC

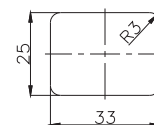
### P-Series

AC-P15CS39  
(Insert Molding)



NEW

取付穴参考図  
Size of Mounting Hole



Part No.

Mounting  
Plate

AC-P15CS39 T=1.0/1.5/2.0/3.0

## AC INLET(インレット)

定格: 15A 250V FOR UL.CSA  
10A 250V FOR SEMKO.CCC

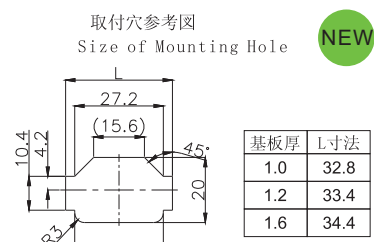
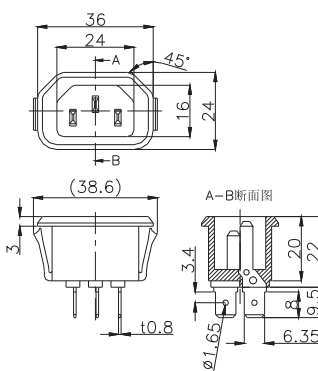
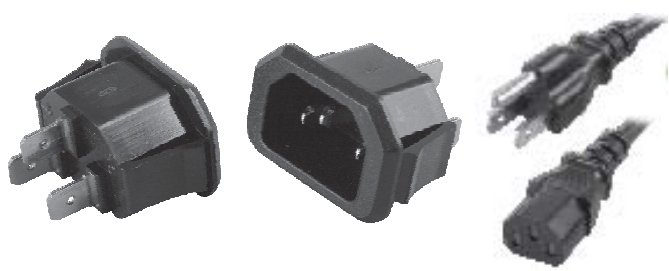
接触抵抗: 30mΩ以下のこと  
絶縁抵抗: DC500Vに於いて1000MΩ以上のこと  
耐電圧: AC2000Vに於いて1分間異常がないこと

Rating: 15A 250V FOR UL.CSA  
10A 250V FOR SEMKO.CCC

Contact resistance: Under 30mΩ  
Insulation Resistance: Over 1000MΩ at 500V DC  
Dielectric withstanding voltage: 1minute at 2000V AC

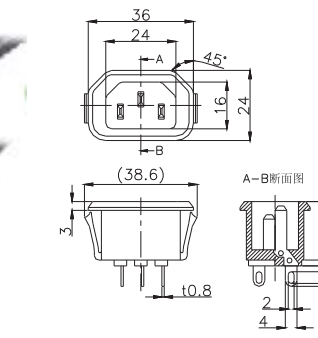
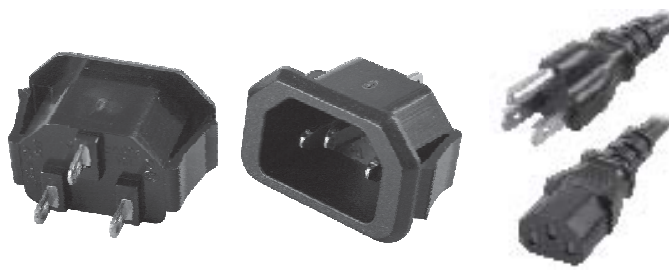
### P-Series

AC-P10CF34   
(Insert Molding)

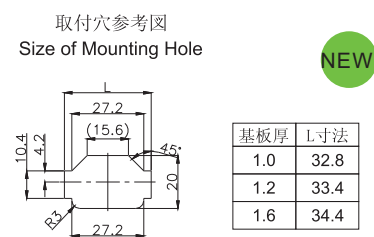


NEW

AC-P13CS37   
(Insert Molding)

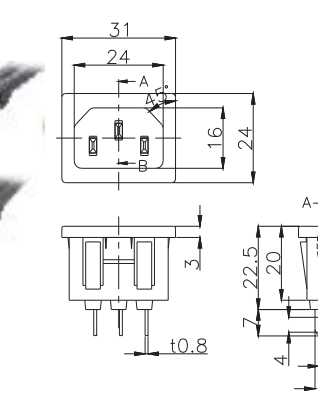
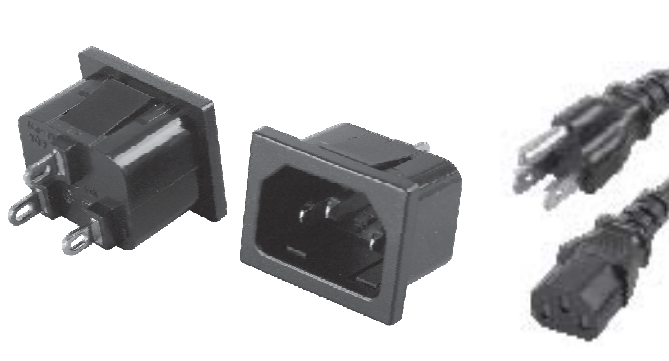


Part No.	Body Color
AC-P13CS37	Black
AC-P13CS45(CDG)	Gray

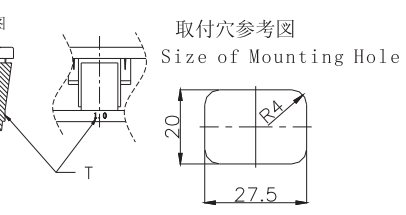


NEW

AC-P11CS35   
(Insert Molding)



Part No.	Mounting Plate
AC-P11CS35	T=1.0/1.2/1.5/1.65/2.0/3.0



NEW

## AC INLET(インレット)

定 格: 15A 250V FOR UL.CSA  
10A 250V FOR SEMKO.CCC

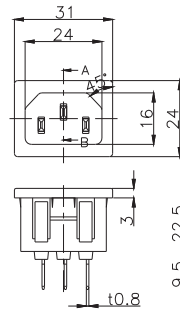
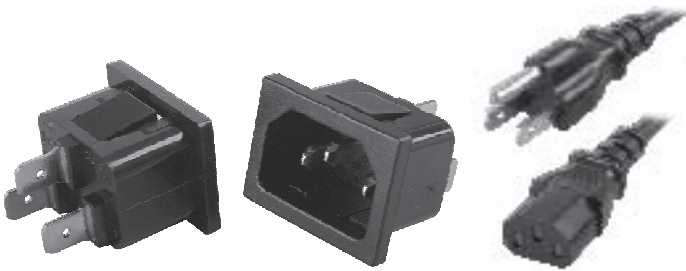
接触抵抗: 30mΩ以下のこと  
絶縁抵抗: DC500Vに於いて1000MΩ以上のこと  
耐電圧: AC2000Vに於いて1分間異常がないこと

Rating: 15A 250V FOR UL.CSA  
10A 250V FOR SEMKO.CCC

Contact resistance: Under 30mΩ  
Insulation Resistance: Over 1000MΩ at 500V DC  
Dielectric withstanding voltage: 1minute at 2000V AC

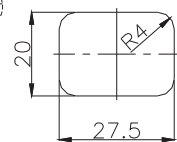
### P-Series

AC-P12CF36   
(Insert Molding)



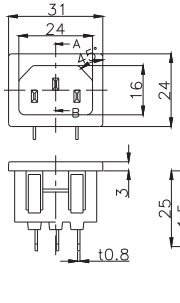
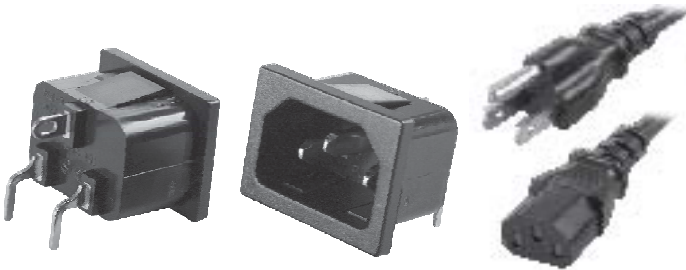
Part No.	Mounting Plate
AC-P12CF36	T=1.0/1.2/1.5/1.65/2.0/3.0

取付穴参考図  
Size of Mounting Hole



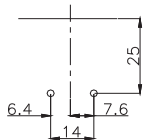
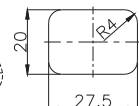
NEW

AC-P14CL38   
(Insert Molding)



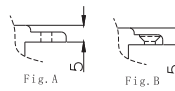
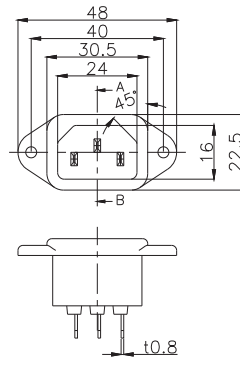
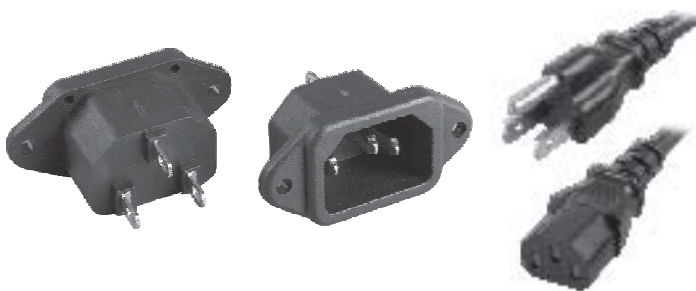
Part No.	Mounting Plate
AC-P14CL38	T=1.0/1.2/1.5/1.65/2.0/3.0

取付穴参考図  
Size of Mounting Hole



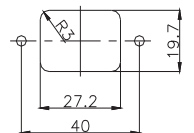
NEW

AC-P16CS40   
(Insert Molding)



Part No.	Terminal
AC-P16CS40	Fig.A
AC-P16CS41	Fig.B

取付穴参考図  
Size of Mounting Hole



NEW

## AC INLET(インレット)

定 格: 15A 250V FOR UL.CSA  
10A 250V FOR SEMKO.CCC

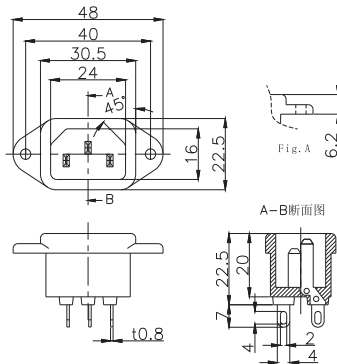
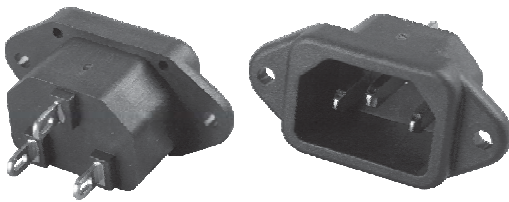
接触抵抗: 30mΩ以下のこと  
絶縁抵抗: DC500Vに於いて1000MΩ以上のこと  
耐電圧: AC2000Vに於いて1分間異常がないこと

Rating: 15A 250V FOR UL.CSA  
10A 250V FOR SEMKO.CCC

Contact resistance: Under 30mΩ  
Insulation Resistance: Over 1000MΩ at 500V DC  
Dielectric withstanding voltage: 1minute at 2000V AC

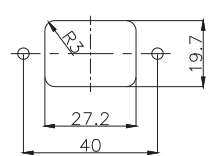
### P-Series

AC-P17CS42   
(Insert Molding)



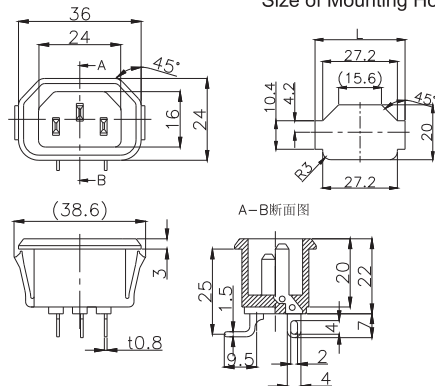
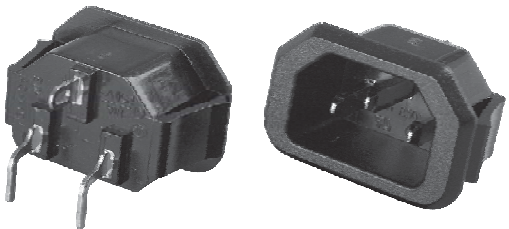
Part No.	Terminal
AC-P17CS42	Fig.A
AC-P17CS43	Fig.B

取付穴参考図  
Size of Mounting Hole



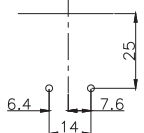
NEW

AC-P19CL46   
(Insert Molding)



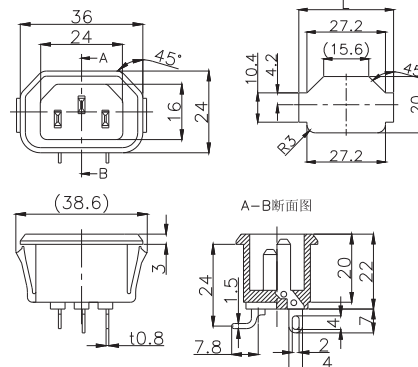
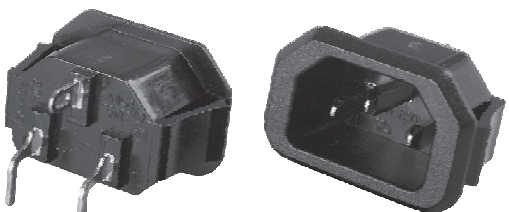
取付穴参考図  
Size of Mounting Hole

基板厚	L寸法
1.0	32.8
1.2	33.4
1.6	34.4



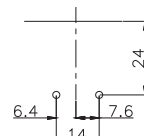
NEW

AC-P19CL47   
(Insert Molding)



取付穴参考図  
Size of Mounting Hole

基板厚	L寸法
1.0	32.8
1.2	33.4
1.6	34.4



NEW

## AC INLET(インレット)

定 格: 15A 250V FOR UL.CSA  
10A 250V FOR SEMKO.CCC

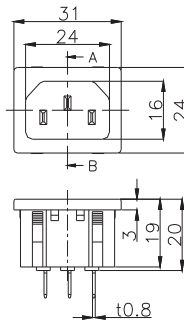
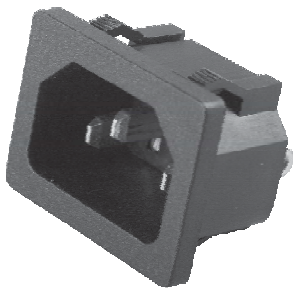
接触抵抗: 30mΩ以下のこと  
絶縁抵抗: DC500Vに於いて1000MΩ以上のこと  
耐電圧: AC2000Vに於いて1分間異常がないこと

Rating: 15A 250V FOR UL.CSA  
10A 250V FOR SEMKO.CCC

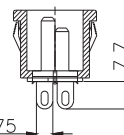
Contact resistance: Under 30mΩ  
Insulation Resistance: Over 1000MΩ at 500V DC  
Dielectric withstanding voltage: 1minute at 2000V AC

### P-Series

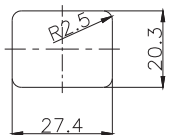
#### AC-P20CF48 (Applying)



A-B断面図



取付穴参考図  
Size of Mounting Hole



NEW

#### AC-P21CF49 (Insert Molding)

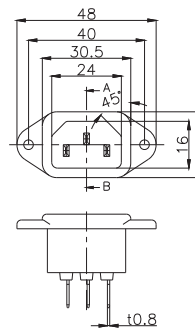
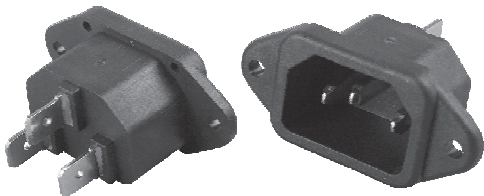
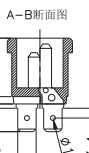
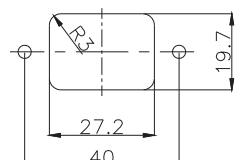


Fig. A

Fig. B



取付穴参考図  
Size of Mounting Hole



NEW

Part No.	Terminal
AC-P21CF49	Fig.A
AC-P21CF50	Fig.B

#### AC-P22CF51 (Insert Molding)

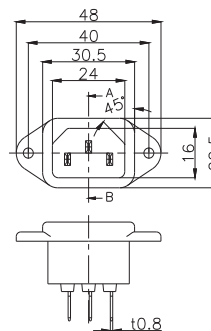
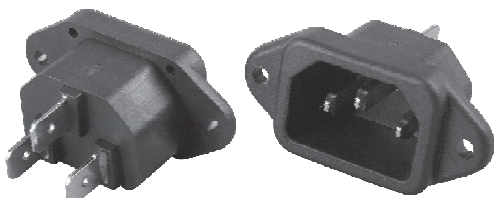
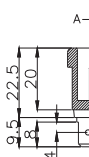
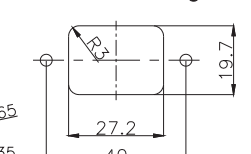


Fig. A

Fig. B



取付穴参考図  
Size of Mounting Hole



NEW

Part No.	Terminal
AC-P22CF51	Fig.A
AC-P22CF52	Fig.B



## AC INLET(インレット)

定格: 15A 250V FOR UL.CSA  
10A 250V FOR SEMKO.CCC

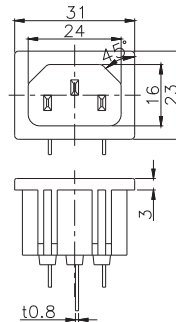
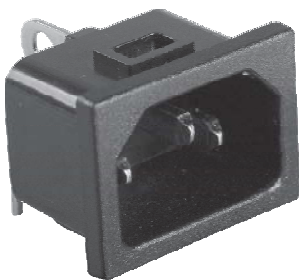
接触抵抗: 30mΩ以下のこと  
絶縁抵抗: DC500Vに於いて1000MΩ以上のこと  
耐電圧: AC2000Vに於いて1分間異常がないこと

Rating: 15A 250V FOR UL.CSA  
10A 250V FOR SEMKO.CCC

Contact resistance: Under 30mΩ  
Insulation Resistance: Over 1000MΩ at 500V DC  
Dielectric withstanding voltage: 1minute at 2000V AC

### P-Series

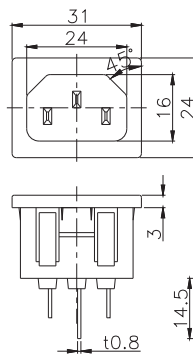
#### AC-P23CL53 (Insert Molding)



Part No.	Mounting Plate
AC-P23CL53	T=1.0/1.2/1.5/1.65/2.0/3.0

NEW

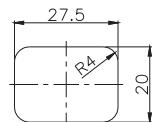
#### AC-P24CS54 (Insert Molding)



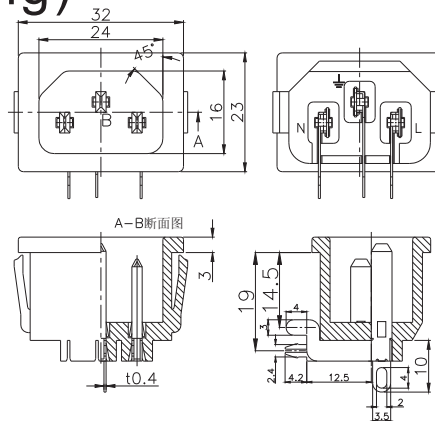
Part No.	Mounting Plate
AC-P24CS54	T=1.0/1.2/1.5/1.65/2.0/3.0

NEW

取付穴参考図  
Size of Mounting Hole

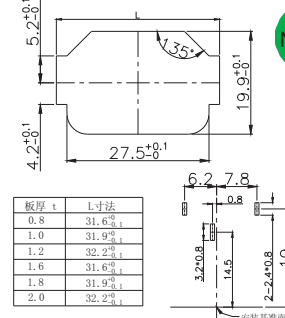


#### AC-P25CL56 (Insert Molding)



Part No.	Mounting Plate
AC-P25CL56	0.8/1.0/1.2
AC-P25CL57	1.6/1.8/2.0

取付穴参考図  
Size of Mounting Hole



NEW

## AC INLET(インレット)

定格: 15A 250V FOR UL.CSA  
10A 250V FOR SEMKO.CCC

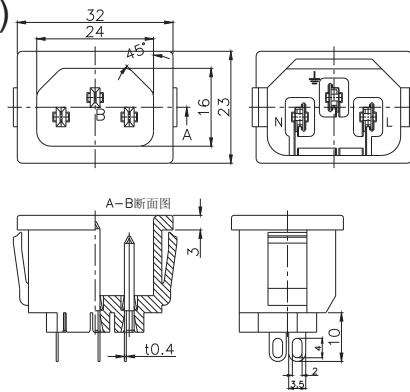
接触抵抗: 30mΩ以下のこと  
絶縁抵抗: DC500Vに於いて1000MΩ以上のこと  
耐電圧: AC2000Vに於いて1分間異常がないこと

Rating: 15A 250V FOR UL.CSA  
10A 250V FOR SEMKO.CCC

Contact resistance: Under 30mΩ  
Insulation Resistance: Over 1000MΩ at 500V DC  
Dielectric withstanding voltage: 1minute at 2000V AC

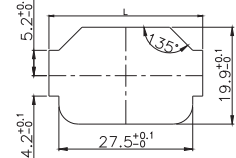
### P-Series

AC-P26CS58  (Applying)



Part No.	Mounting Plate
AC-P26CS58	0.8/1.0/1.2
AC-P26CS59	1.6/1.8/2.0

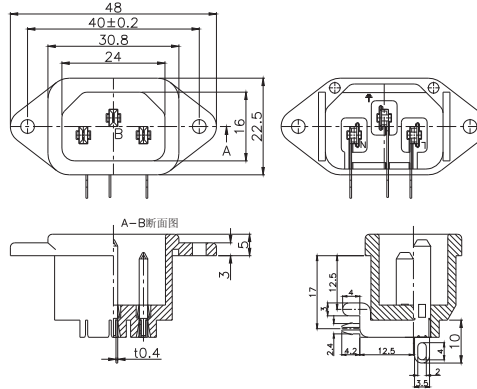
取付穴参考図  
Size of Mounting Hole



板厚 t	1寸法
0.8	31.6 <sup>+0.1</sup>
1.0	31.9 <sup>+0.1</sup>
1.2	32.2 <sup>+0.1</sup>
1.6	31.6 <sup>+0.1</sup>
1.8	31.9 <sup>+0.1</sup>
2.0	32.2 <sup>+0.1</sup>

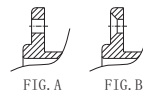
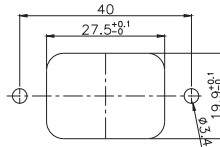
NEW

AC-P27CL60  (Applying)



Part No.	Terminal
AC-P27CL60	Fig. A
AC-P27CL61	Fig. B

取付穴参考図  
Size of Mounting Hole



NEW

## AC INLET(インレット)

定 格:20A 250V FOR UL.CSA  
16A 250V FOR SEMKO.CCC

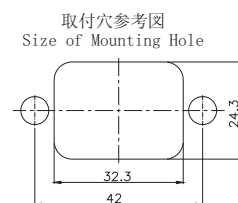
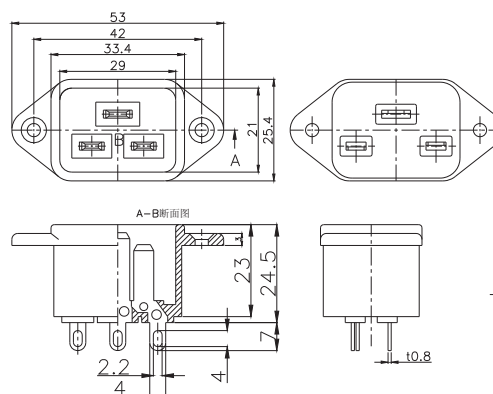
接触抵抗: 30mΩ以下のこと  
絶縁抵抗: DC500Vに於いて1000MΩ以上のこと  
耐電圧: AC2000Vに於いて1分間異常がないこと

Rating:20A 250V FOR UL.CSA  
16A 250V FOR SEMKO.CCC

Contact resistance:Under 30mΩ  
Insulation Resistance:Over 1000MΩ at 500V DC  
Dielectric withstanding voltage:1minute at 2000V AC

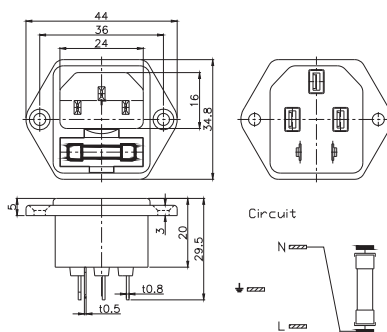
### P-Series

AC-P28CS62 (Insert Molding)  (Applying)



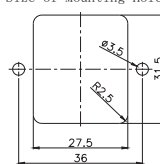
NEW

AC-PF01-HF



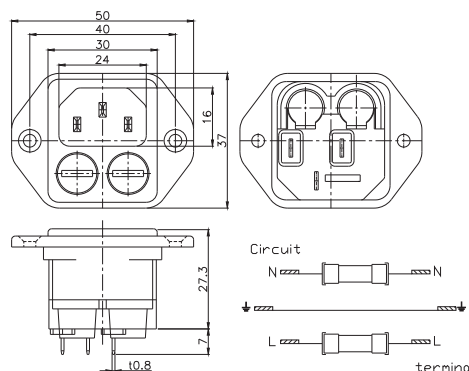
Rating : 10A 250V  
定 格 : 10A 250V  
Matching Fuse :  $\phi 5.2 \times 20$   
適合ヒューズ :  $\phi 5.2 \times 20$

取付穴参考図  
Size of Mounting Hole



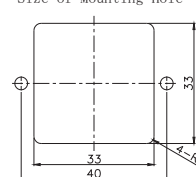
NEW

AC-PF02-F



Rating : 6A 250V  
定 格 : 6A 250V  
Matching Fuse :  $\phi 5.2 \times 20$   
適合ヒューズ :  $\phi 5.2 \times 20$

取付穴参考図  
Size of Mounting Hole



NEW